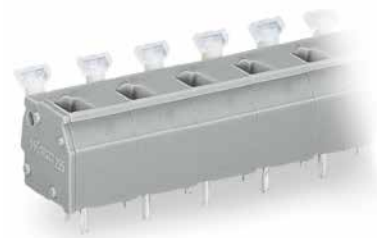
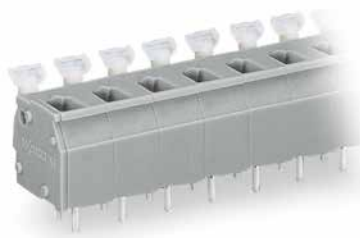
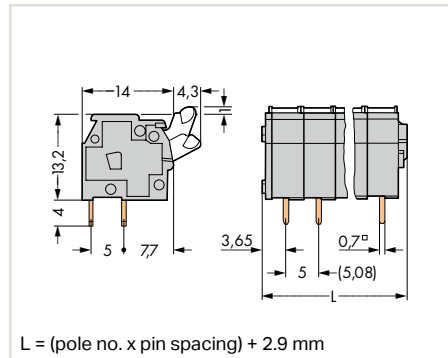


PCB Terminal Strips with Push-Buttons, 2.5 mm² Pin Spacing: 5/5.08 mm, 7.5/7.62 mm, 10/10.16 mm 255 Series

1



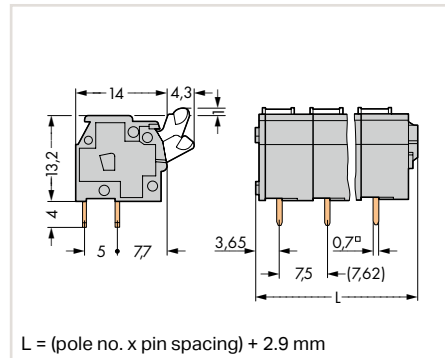
Dimensions (in mm):



PCB terminal strip with push-buttons,
2 solder pins/pole, gray,
5/5.08 mm (0.2 inch) pin spacing

Pole No.	Item No.	Pack. Unit
2	255-402	400 (100)
3	255-403	280 (70)
4	255-404	200 (50)
5	255-405	160 (40)
6	255-406	140 (35)
7	255-407	120 (30)
8	255-408	100 (25)
9	255-409	100 (25)
10	255-410	80 (20)
12	255-412	60 (15)
16	255-416	60 (15)
24	255-424	40 (10)
36	255-436	20 (5)
48	255-448	20 (5)

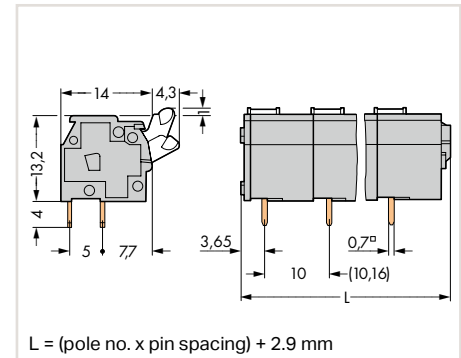
Dimensions (in mm):



PCB terminal strip with push-buttons,
2 solder pins/pole, gray,
7.5/7.62 mm (0.3 inch) pin spacing

Pole No.	Item No.	Pack. Unit
2	255-502	280 (70)
3	255-503	180 (45)
4	255-504	140 (35)
5	255-505	120 (30)
6	255-506	100 (25)
7	255-507	80 (20)
8	255-508	60 (15)
9	255-509	60 (15)
10	255-510	60 (15)
12	255-512	40 (10)
16	255-516	40 (10)
24	255-524	20 (5)

Dimensions (in mm):



PCB terminal strip with push-buttons,
2 solder pins/pole, gray,
10/10.16 mm (0.4 inch) pin spacing

Pole No.	Item No.	Pack. Unit
2	255-602	200 (50)
3	255-603	140 (35)
4	255-604	100 (25)
5	255-605	80 (20)
6	255-606	60 (15)
7	255-607	60 (15)
8	255-608	60 (15)
9	255-609	40 (10)
10	255-610	40 (10)
12	255-612	40 (10)
16	255-616	20 (5)
24	255-624	20 (5)

Available upon request (depending on quantity required):

- Other pole numbers
- Versions for Ex e II and Ex i
- Other colors: ● red, ● blue, ● dark gray, ● light gray, ● orange, ● light green
- Mixed-color terminal strips
- Direct marking